

The invisible dovetail construction of Allura Colour Plus ensures a strong and stable connection which smoothly seals the floor surface. A moisture control system prevents buildup of mold and bacteria, keeping the subfloor dry.

Technical specifications

Allura Colour Plus meet the requirements of EN-ISO 10581 - Type 1

Allura Colour Plus		
	Total thickness	EN-ISO 2434610.3 mm
	Collection size	14
	Commercial use	EN-ISO 1087434, very heavy
	Industrial use	EN-ISO 1087443, heavy
	Tile size	EN-ISO 24342607 x 607 mm
	Total weight	EN-ISO 2399712 kg/m²
	Dimensional stability	EN-ISO 23999≤ 0.25 %
	Residual indentation	EN-ISO 24343-1≤ 0.10 mm
	Castor chair continuous use	ISO 4918/EN 425excellent
	Impact sound reduction	EN-ISO 717-2≥ 12 dB
	Light fastness	EN-ISO 105-B02≥ 6
	Resistance to chemicals	EN-ISO 26987excellent
	VOC emissions	AgBB / DIBTsuitable for indoor applications
	Total VOC 28 days	ISO 16000-9< 10 µg/m³
	Slip resistance	DIN 51130R9
	Creating better environments	
	Renewable electricity	Allura Colour Plus is manufactured using 100% electricity from renewable sources.
	Recycled content	Allura Colour Plus contains up to 63% recycled content.

Allura Colour Plus meet the requirements of EN 14041		
	Reaction to fire	EN 13501-1B _s -s1
	Slip resistance	EN 13893DS: ≥ 0,30
	Thermal conductivity	EN-ISO 104560.25 W/(m.K)
	Body voltage	EN 1815≤ 2,0 kV

The above information is subject to modifications for the benefit of further improvements.

All Forbo Flooring Systems' sales organisations worldwide have a certified Quality Management System in accordance with ISO 9001. All Forbo Flooring Systems' manufacturing operations have a certified Environmental Management System in accordance with ISO 14001. The Life Cycle Assessment (LCA) of Forbo Flooring Systems' products is documented in individual Environmental Product Declarations (EPD's) which can be found on all of our websites.



Whilst Forbo Flooring UK Limited does its best to ensure that the contents of this samplebook are correct and accurate at the time of publication, to the fullest extent permitted by law, Forbo Flooring UK Limited makes no, and expressly disclaims all guarantees of any kind, express or implied in respect of the information, content, materials or products displayed in this samplebook and does not represent that the information is accurate, complete or current and you are advised to visit our website at www.forbo-flooring.co.uk for up-to-date details or corrections to such contents.

creating better environments

SAMPLE SERVICE
0800 731 2369
sample.uk@forbo.com

benmore.co.uk

ns5Plus



UK
Forbo Flooring UK Limited
High Holborn Road
Ripley
DE5 3NT

London EC1 showroom
79 St John Street, Clerkenwell
London EC1M 4NR
Tel: 0207 553 9300

For commercial enquiries:
If calling from the North,
Midlands, London & South East
Tel: 0800 0282 162
Fax: 01772 646 912
If calling from Scotland &
South West
Tel: 0800 0935 258
Fax: 01592 643 999

Forbo

FLOORING SYSTEMS

Cl/SfB
(43) | Tn6

March 2018



high density glue down and interlocking loose lay tiles

allura

colour plus

creating better environments

Forbo

FLOORING SYSTEMS

allura colour.plus

Ideal for the Retail and Leisure & Hospitality sector, Allura Colour Plus offers a highly robust, stylish flooring solution which can be installed quickly, 15-20m² per hour, reducing the level of disruption to customers or guests.

The interlocking tile technology has been proven through Forbo's Colorex Plus system and the strong and durable high density tiles of Allura Colour Plus ensure the product is suitable for wheeled traffic and heavy loads. As a modular product, damaged tiles can be replaced easily and although welding is not required, the product can be welded in areas where high levels of spillage are anticipated.

As a true loose-lay system, Allura Colour Plus has none of the constraints associated with adhesive, such as setting, drying, VOC emissions and odours, or messy and dusty sub-floor preparation. However, there is more to Allura Colour plus than excellent functionality. The matt finish and the 14 balanced, tone-on-tone colourways will add a sophistication to any commercial interior.

C68014 | cafe au lait

RAPID, HARD-WEARING, HIGH PERFORMING AND ELEGANT FLOORING SOLUTION

- Made by Forbo with proven Colorex technology
- High quality, high density pressed tiles
- Superior locking strength
- Suitable for wheeled traffic and heavy loads
- Integrated invisible locking system
- Balanced range of 14 tone-on-tone, matt colours for multiple applications
- Quick installation minimising disruption to the business
- Integrated moisture management system prevents a build up of mold and bacteria
- The modular system allows damaged tiles to be easily replaced
- Although welding is not necessary, Allura Colour Plus can be welded if required.

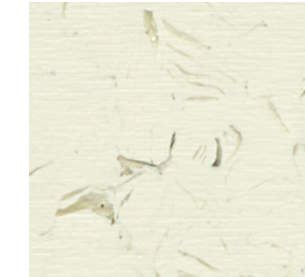
Adhesive-free installation:

- Cleaner installation with less dirt and dust
- Odour free - ideal for busy retail and food service areas



**COMMITTED
TO THE HEALTH
OF ONE**
WWW.FORBO-FLOORING.CO.UK/CHO

At Forbo Flooring Systems we aim to create better indoor environments. Floors that are safe, hygienic and comfortable contribute to the health of the individual. Allura Colour Plus is easy to install, avoids debris and dust during installation and results in a durable hygienic flooring solution that is easy to maintain.



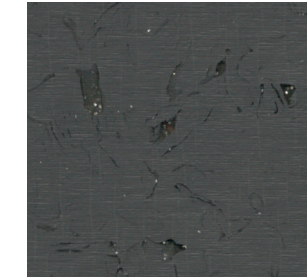
651011 | chalk LRV 84



651037 | cloud LRV 52



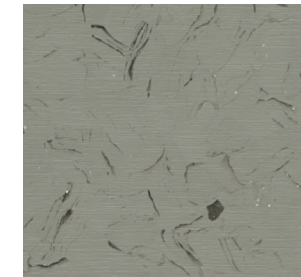
651038 | neutral grey LRV 25



651026 | cool grey LRV 10



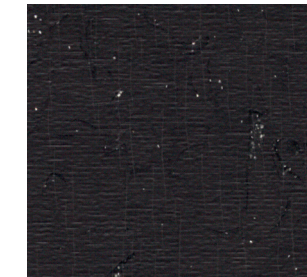
651019 | light grey LRV 48



651013 | cement LRV 27



651015 | dark lead LRV 15



651036 | charcoal LRV 5



651012 | pearl grey LRV 52



651014 | cafe au lait LRV 31



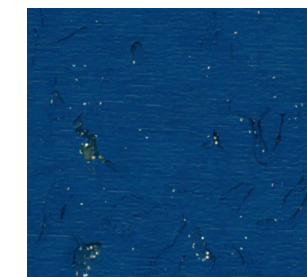
651018 | faded brown LRV 12



651039 | ruby red LRV 9



651040 | petrol green LRV 10



651035 | marine blue LRV 7

The subtle tone-on-tone colour in the Allura Colour Plus collection enables you to design and direct your traffic or to highlight certain areas in your space.